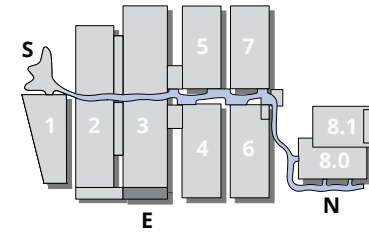


East Access



VIP AREA

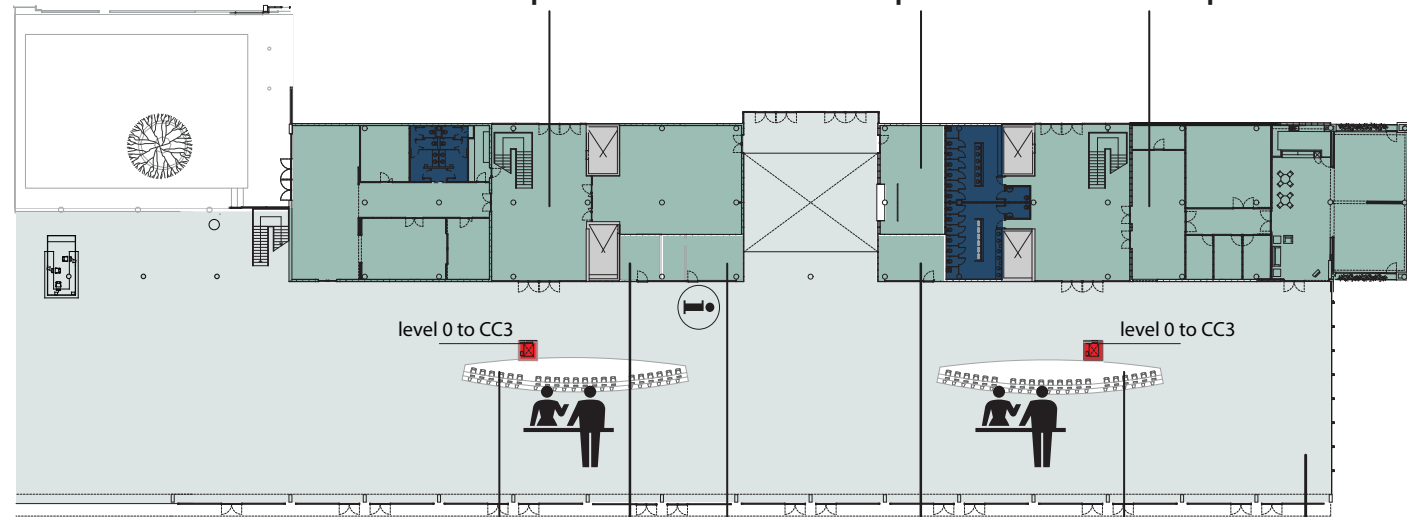
CLOAKROOM

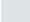





PRESS AREA

610 sqm

71 sqm

659 sqm



-  Halls and open areas
-  Enclosed rooms
-  Elevators
-  Restrooms
-  Desk/ cloakroom
-  Info point

**REGISTRATION
COUNTER**
58 sqm
21 positions

INFO POINT
36 sqm

**REGISTRATION
COUNTER**
58 sqm
21 positions

STORAGE
18 sqm

STORAGE
28 sqm

OPEN AREA
2848 sqm